

310SK/310SK TC

Engine	310SK			310SK TC	
Manufacturer and Model	John Deere PowerTech™ Plus 4045HT073 turbo-charged, standard			John Deere PowerTech Plus 4045HT063 turbo-charged, standard	
Non-Road Emissions Standard	EPA Interim Tier 4/EU Stage IIIB			EPA Interim Tier 4/EU Stage IIIB	
Displacement	4.5 L (276 cu. in.)			4.5 L (276 cu. in.)	
Net Peak Power (ISO 9249)	72 kW (96 hp) at 2,000 rpm			76 kW (102 hp) at 2,000 rpm	
Net Peak Torque (ISO 9249)	399 Nm (295 lb.-ft.) at 1,400 rpm			408 Nm (301 lb.-ft.) at 1,400 rpm	
Net Torque Rise	40%			32%	
Lubrication	Pressure system with spin-on filter and cooler			Pressure system with spin-on filter and cooler	
Air Cleaner	Dual-stage dry type with safety element and evacuator valve			Dual-stage dry type with safety element and evacuator valve	
Cooling	310SK / 310SK TC				
Fan Type	Electronically controlled, variable-rate suction type				
Engine Coolant Rating	-40 deg. C (-40 deg. F)				
Engine Oil Cooler	Oil to water				
Powertrain	310SK			310SK TC	
Transmission	5 speed, helical-cut gears, full PowerShift™ transmission with hydraulic reverser standard; electric clutch cutoff on loader lever				
Torque Converter	Single stage, dual phase with 2.63:1 stall ratio, 280 mm (11 in.)				
Maximum Travel Speeds with Standard Engine, Measured with 19.5L-24 Rear Tires	<i>Forward</i>		<i>Reverse</i>		
Gear 1	5.6 km/h (3.5 mph)	7.0 km/h (4.4 mph)	5.7 km/h (3.6 mph)	7.3 km/h (4.5 mph)	
Gear 2	10.2 km/h (6.3 mph)	12.9 km/h (8.0 mph)	10.5 km/h (6.5 mph)	13.3 km/h (8.2 mph)	
Gear 3	20.8 km/h (13.0 mph)	20.6 km/h (12.8 mph)	21.4 km/h (13.3 mph)	21.2 km/h (13.2 mph)	
Gear 4	32.8 km/h (20.4 mph)	—	32.9 km/h (20.5 mph)	—	
Gear 5	40.0 km/h (25.0 mph)	—	40.0 km/h (25.0 mph)	—	
Axles					
Axle Oscillation, Stop to Stop, Front Axle	22 deg.				
Axle Ratings	<i>Non-Powered Front</i>	<i>Mechanical-Front-Wheel Drive (MFWD)</i>	<i>Rear</i>	<i>Mechanical-Front-Wheel Drive (MFWD)</i>	<i>Rear</i>
Static	18 000 kg (39,683 lb.)	12 000 kg (26,455 lb.)	13 000 kg (28,660 lb.)	12 000 kg (26,455 lb.)	13 000 kg (28,660 lb.)
Dynamic	7200 kg (15,873 lb.)	6000 kg (13,228 lb.)	7000 kg (15,432 lb.)	6000 kg (13,228 lb.)	7000 kg (15,432 lb.)
Ultimate	32 950 kg (72,642 lb.)	28 200 kg (62,170 lb.)	30 600 kg (67,461 lb.)	28 200 kg (62,170 lb.)	30 600 kg (67,461 lb.)
Differentials					
MFWD Axle	Automatic, limited-slip traction control			Automatic, limited-slip traction control	
Rear Axle	Foot actuated, hydraulically engaged 100% mechanical lock			Foot actuated, hydraulically engaged 100% mechanical lock	
Steering (ISO 5010)	Hydrostatic power steering and emergency steering				
Axle	<i>Non-Powered Front</i>	<i>MFWD</i>	<i>MFWD</i>		
Curb-Turning Radius					
With Brakes	3.44 m (11 ft. 4 in.)	3.58 m (11 ft. 9 in.)	3.58 m (11 ft. 9 in.)		
Without Brakes	3.94 m (12 ft. 11 in.)	4.08 m (13 ft. 5 in.)	4.08 m (13 ft. 5 in.)		
Bucket Clearance Circle					
With Brakes	9.89 m (32 ft. 5 in.)	10.11 m (33 ft. 2 in.)	10.40 m (34 ft. 1 in.)		
Without Brakes	10.76 m (35 ft. 4 in.)	11.05 m (36 ft. 3 in.)	11.37 m (37 ft. 4 in.)		
Steering Wheel Turns (lock to lock)	3.2	2.7	2.6 to 3.6 (flow amplified)		
Final Drive, Mechanical-Front Wheel and Rear Axle	Heavy duty, outboard planetary final drives distribute shock loads over 3 gears				
Brakes (ISO 3450)					
Service	Power assisted, hydraulic wet disc, mounted inboard, self-adjusting and self-equalizing				
Parking	Spring applied, hydraulically released, wet, multi-disc, independent of service brakes with electric switch control				
Hydraulics					
Main Pump	Open center, gear type, tandem with unloader			Pressure compensated load sensing (PCLS), axial-piston pump	
Pump Flow at 2,200 rpm					
Backhoe	136 L/m (36 gpm)			159 L/m (42 gpm)	
Loader	106 L/m (28 gpm)			159 L/m (42 gpm)	
System Relief Pressure, Backhoe and Loader	24 993 kPa (3,625 psi)			24 993 kPa (3,625 psi)	
Controls					
Backhoe	2-lever manual standard; pilot controls with pattern select, 3-lever manual controls with foot swing, and manual and/or electric auxiliary functions optional			TMC electrohydraulic (EH) controls with auxiliary functions standard	

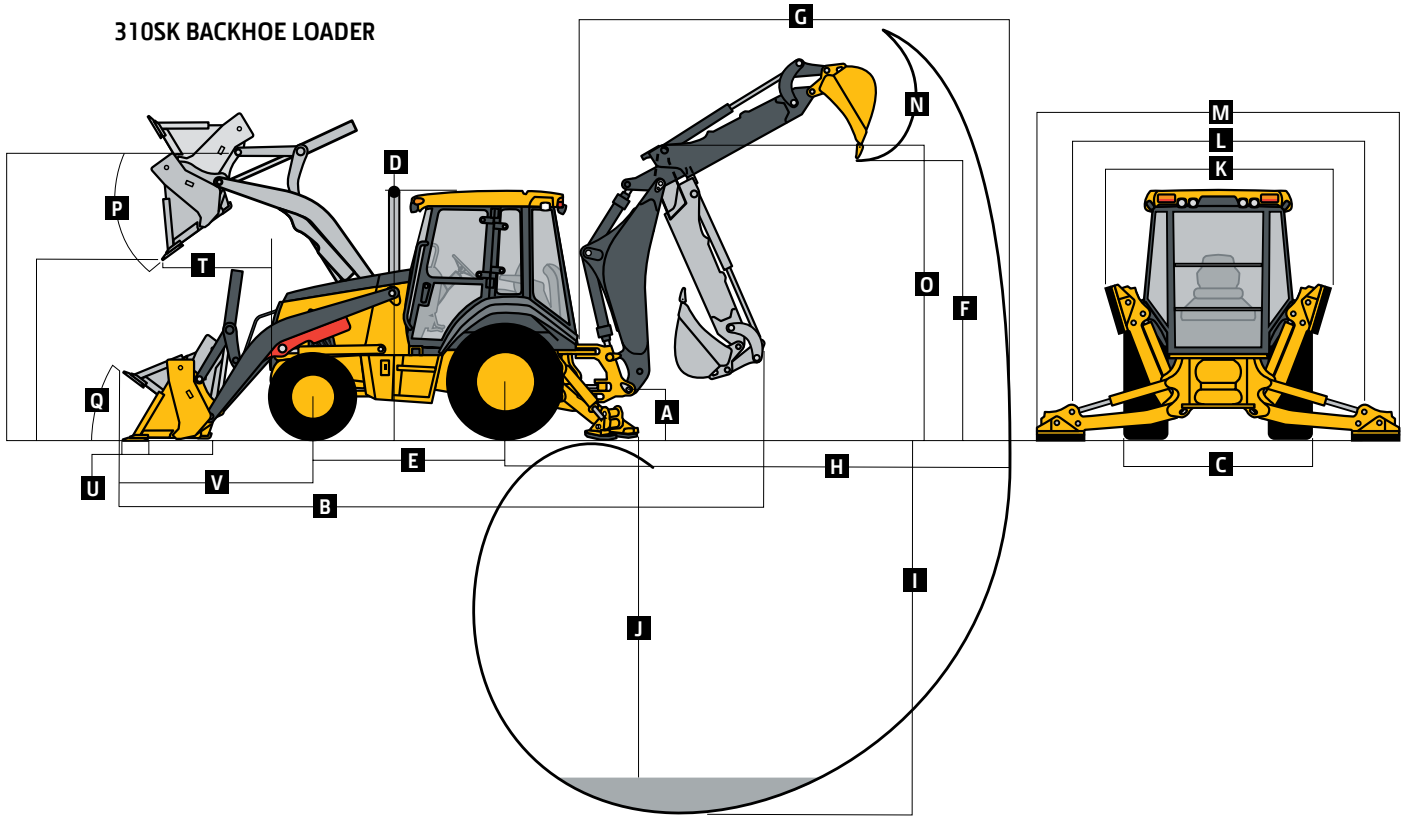


Hydraulics (continued)	310SK	310SK TC				
Controls (continued)						
Loader	Single-lever control with electric clutch cutoff switch; with auxiliary hydraulics – single-lever control with electric clutch cutoff switch, MFWD (on/off/momentary), and integrated EH proportional control of auxiliary hydraulics	TMC EH controls with auxiliary functions standard				
Cylinders						
Type	Heat-treated, chrome-plated, polished rods; hardened steel (replaceable bushings) pivot pins					
	<i>Bore</i>	<i>Rod Diameter</i>	<i>Stroke</i>	<i>Bore</i>	<i>Rod Diameter</i>	<i>Stroke</i>
Loader Boom (2)	80 mm (3.15 in.)	50 mm (1.97 in.)	790 mm (31.10 in.)	90 mm (3.54 in.)	56 mm (2.20 in.)	673 mm (26.50 in.)
Loader Bucket (1)	90 mm (3.54 in.)	50 mm (1.97 in.)	744 mm (29.29 in.)	100 mm (3.94 in.)	56 mm (2.20 in.)	733 mm (28.86 in.)
Backhoe Boom (1)	120 mm (4.72 in.)	56 mm (2.20 in.)	795 mm (31.30 in.)	120 mm (4.72 in.)	56 mm (2.20 in.)	795 mm (31.30 in.)
Backhoe Crowd (1)	115 mm (4.53 in.)	63 mm (2.48 in.)	602.5 mm (23.72 in.)	115 mm (4.53 in.)	63 mm (2.48 in.)	602.5 mm (23.72 in.)
Backhoe Bucket (1)	90 mm (3.54 in.)	56 mm (2.20 in.)	810 mm (31.89 in.)	100 mm (3.94 in.)	63 mm (2.48 in.)	810 mm (31.89 in.)
Backhoe Bucket, Heavy-Duty Option (1)	100 mm (3.94 in.)	63 mm (2.48 in.)	810 mm (31.89 in.)	—	—	—
Backhoe Swing (2)	90 mm (3.54 in.)	50 mm (1.97 in.)	278 mm (10.94 in.)	90 mm (3.54 in.)	50 mm (1.97 in.)	278 mm (10.94 in.)
Backhoe Extendable Dipperstick (1)	70 mm (2.76 in.)	40 mm (1.57 in.)	1067 mm (42.01 in.)	70 mm (2.76 in.)	40 mm (1.57 in.)	1067 mm (42.01 in.)
Backhoe Stabilizer, Standard (2)	90 mm (3.54 in.)	50 mm (1.97 in.)	500 mm (19.69 in.)	—	—	—
Backhoe Stabilizer, Longer Optional (2)	100 mm (3.94 in.)	50 mm (1.97 in.)	500 mm (19.69 in.)	100 mm (3.94 in.)	50 mm (1.97 in.)	500 mm (19.69 in.)
Non-Powered Axle (1)	70 mm (2.76 in.)	42 mm (1.65 in.)	213 mm (8.39 in.)	70 mm (2.76 in.)	42 mm (1.65 in.)	213 mm (8.39 in.)
MFWD (1)	67 mm (2.64 in.)	42 mm (1.65 in.)	210 mm (8.27 in.)	67 mm (2.64 in.)	42 mm (1.65 in.)	210 mm (8.27 in.)
Electrical						
Voltage	12 volt	12 volt				
Alternator Rating	120 amp	200 amp				
Lights	10 halogen: 4 front, 4 rear, and 2 side docking (32,500 candlepower each); turn signals and flashers: 2 front and 2 rear; stop and taillights; and 2 rear reflectors					
Operator Station						
Type (SAE J1040)	310SK / 310SK TC Canopy, isolation mounted, ROPS/FOPS, left/right access, with molded roof					
Tires/Wheels						
	<i>Front</i>	<i>Rear</i>	<i>Front</i>	<i>Rear</i>		
Non-Powered Front Axle	11L-16 F-3 (12)	19.5L-24 R-4 (10)	—	—		
MFWD	12.5/80-18 I-3 (14)	19.5L-24 R-4 (10)	12.5/80-18 I-3 (14)	19.5L-24 R-4 (10)		
	12.5/80-18 I-3 (12)	19.5L-24 R-4 (10)	12.5/80-18 I-3 (12)	19.5L-24 R-4 (10)		
	12.5/80-18 I-3 (12)	21L-24 R-4 (12)	12.5/80-18 I-3 (12)	21L-24 R-4 (12)		
	340/80R18 XMCL	500/70R24 XMCL	340/80R18 XMCL	500/70R24 XMCL		
Serviceability						
Hydraulic Oil Filter, Spin-On Enclosed Replaceable Element	310SK / 310SK TC 6-micron filtration; 1,000 break-in/service hours					
Refill Capacities						
Cooling System	32.9 L (34.8 qt.)					
Rear Axle	18 L (19 qt.)					
Engine Oil (including vertical spin-on filter)	13 L (13.7 qt.)					
Torque Converter and Transmission	15.1 L (16 qt.)					
Fuel Tank (with ground-level fueling)	155.2 L (41 gal.)					
Hydraulic System	89.3 L (23.6 gal.)					
Hydraulic Reservoir	37.1 L (9.8 gal.)					
MFWD Housing						
Axle	6.5 L (6.9 qt.)					
Planetary (each)	0.9 L (1 qt.)					
Operating Weights						
With Full Fuel Tank, 79-kg (175 lb.) Operator, and Standard Equipment	310SK 6671 kg (14,708 lb.)	310SK TC —				
Typical with Cab, MFWD, Extendable Dipperstick, and 454-kg (1,000 lb.) Counterweight	7828 kg (17,258 lb.)	—				
With Cab, MFWD, Extendable Dipperstick, and 567-kg (1,250 lb.) Counterweight	—	9006 kg (19,855 lb.)				
Optional Components (weight difference between base equipment and option)						
Cab	263 kg (580 lb.)	In base				
MFWD with Tires	220 kg (485 lb.)	In base				
Extendable Dipperstick	222 kg (490 lb.)	In base				
Front Loader Coupler	286 kg (630 lb.)	In base				
Backhoe Bucket Coupler	63 kg (138 lb.)	63 kg (138 lb.)				

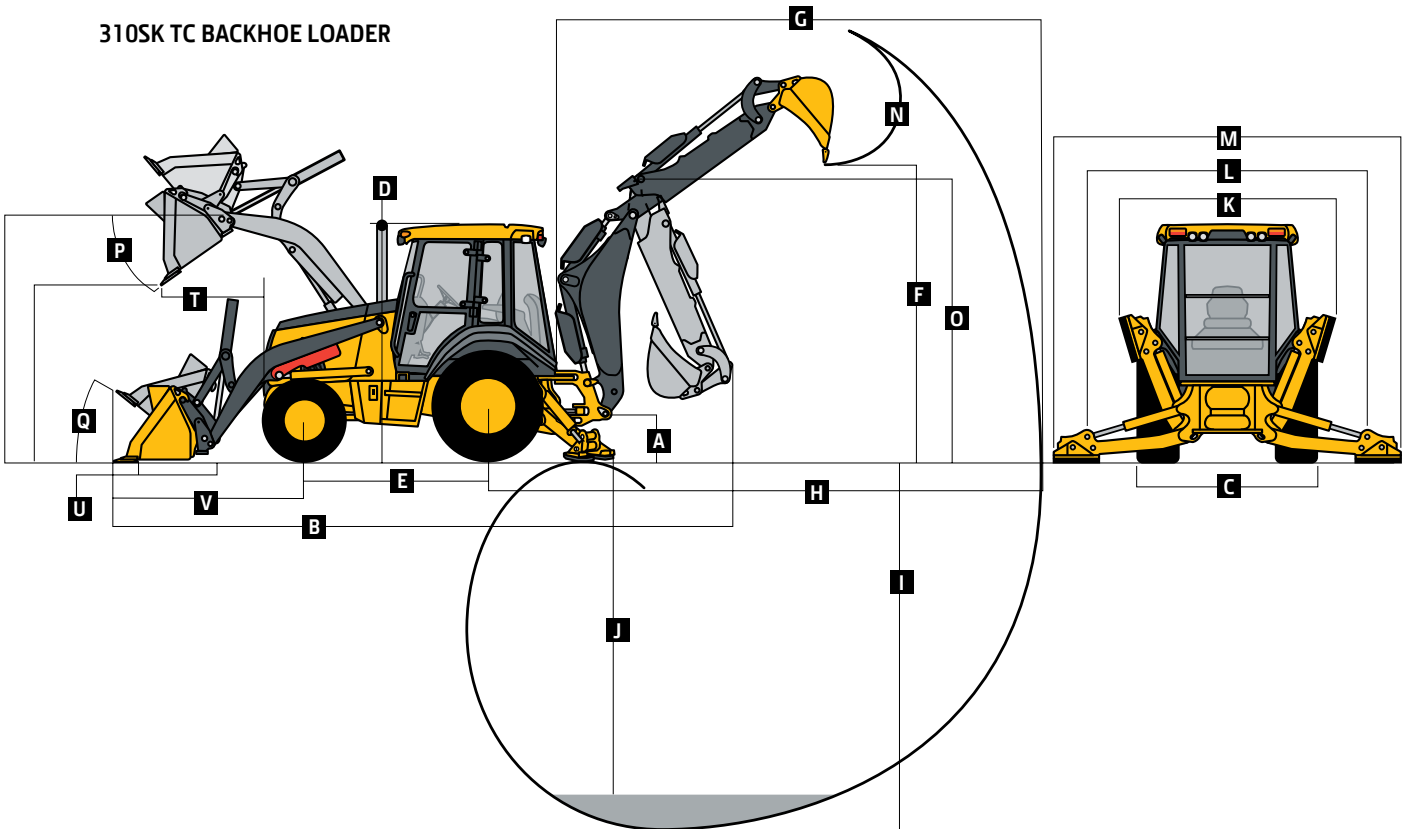
Overall Dimensions

	310SK	310SK TC
A Ground Clearance, Minimum	330 mm (13 in.)	330 mm (13 in.)
B Overall Length, Transport	7.16 m (23 ft. 6 in.)	7.27 m (23 ft. 10 in.)
C Width Over Tires	2.18 m (7 ft. 2 in.)	2.18 m (7 ft. 2 in.)
D Height to Top of ROPS/Cab	2.79 m (9 ft. 2 in.)	2.79 m (9 ft. 2 in.)
E Length from Axle to Axle		
Non-Powered Front Axle	2.11 m (6 ft. 11 in.)	—
MFWD Axle	2.14 m (7 ft. 0 in.)	2.14 m (7 ft. 0 in.)

310SK BACKHOE LOADER



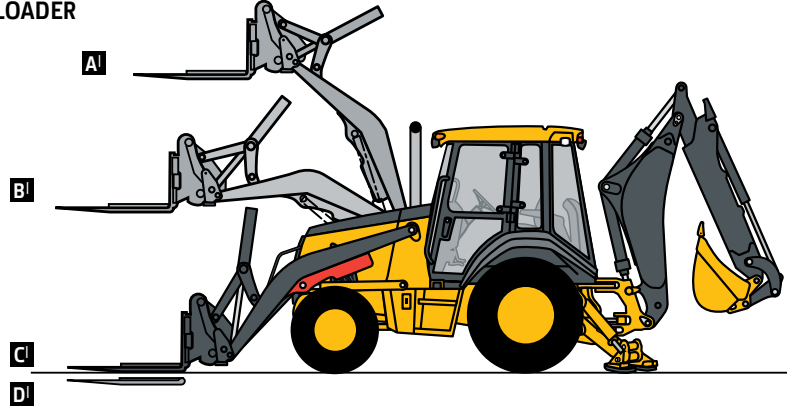
310SK TC BACKHOE LOADER



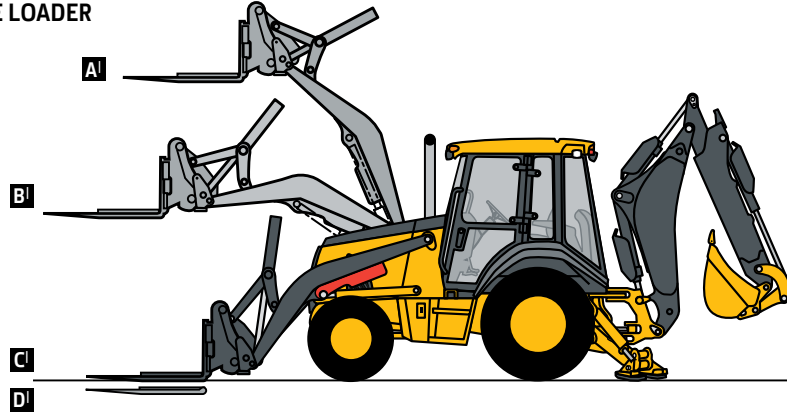
Backhoe Dimensions/Performance		310SK			310SK TC	
Backhoe specifications are with 610-mm x 0.21-m³ (24 in. x 7.5 cu. ft.) bucket						
Bucket Range	305–762 mm (12–30 in.)			305–762 mm (12–30 in.)		
Digging Force				2 joysticks		
Bucket Cylinder	53.3 kN (11,990 lb.)			68.6 kN (15,430 lb.)		
With Heavy-Duty Cylinder Option	67.7 kN (15,230 lb.)			—		
Crowd Cylinder	36.0 kN (8,090 lb.)			36.0 kN (8,090 lb.)		
Swing Arc	180 deg.			180 deg.		
Operator Control	2 levers			2 joysticks		
	<i>With Standard Backhoe</i>	<i>With Optional Extendable Dipperstick</i>		<i>With Extendable Dipperstick</i>		
		<i>Retracted</i>	<i>Extended</i>	<i>Retracted</i>	<i>Extended</i>	
F Loading Height, Truck Loading Position	3.43 m (11 ft. 3 in.)	3.43 m (11 ft. 3 in.)	4.29 m (14 ft. 1 in.)	3.43 m (11 ft. 3 in.)	4.29 m (14 ft. 1 in.)	
G Reach from Center of Swing Pivot	5.56 m (18 ft. 3 in.)	5.66 m (18 ft. 7 in.)	6.68 m (21 ft. 11 in.)	5.66 m (18 ft. 7 in.)	6.68 m (21 ft. 11 in.)	
H Reach from Center of Rear Axle	6.63 m (21 ft. 9 in.)	6.73 m (22 ft. 1 in.)	7.72 m (25 ft. 4 in.)	6.73 m (22 ft. 1 in.)	7.72 m (25 ft. 4 in.)	
I Digging Depth (SAE maximum)	4.42 m (14 ft. 6 in.)	4.55 m (14 ft. 11 in.)	5.61 m (18 ft. 5 in.)	4.55 m (14 ft. 11 in.)	5.61 m (18 ft. 5 in.)	
J Digging Depth (SAE)						
610-mm (2 ft.) Flat Bottom	4.37 m (14 ft. 4 in.)	4.50 m (14 ft. 9 in.)	5.56 m (18 ft. 3 in.)	4.50 m (14 ft. 9 in.)	5.56 m (18 ft. 3 in.)	
2440-mm (8 ft.) Flat Bottom	4.06 m (13 ft. 4 in.)	4.19 m (13 ft. 9 in.)	5.33 m (17 ft. 6 in.)	4.19 m (13 ft. 9 in.)	5.33 m (17 ft. 6 in.)	
K Stabilizer Width, Transport	2.18 m (7 ft. 2 in.)	2.18 m (7 ft. 2 in.)	2.18 m (7 ft. 2 in.)	2.18 m (7 ft. 2 in.)	2.18 m (7 ft. 2 in.)	
L Stabilizer Spread, Operating						
Standard Stabilizers	3.10 m (10 ft. 2 in.)	3.10 m (10 ft. 2 in.)	3.10 m (10 ft. 2 in.)	3.10 m (10 ft. 2 in.)	3.10 m (10 ft. 2 in.)	
Long Stabilizers	3.45 m (11 ft. 4 in.)	3.45 m (11 ft. 4 in.)	3.45 m (11 ft. 4 in.)	3.45 m (11 ft. 4 in.)	3.45 m (11 ft. 4 in.)	
M Stabilizer Overall Width, Operating						
Standard Stabilizers	3.53 m (11 ft. 7 in.)	3.53 m (11 ft. 7 in.)	3.53 m (11 ft. 7 in.)	3.53 m (11 ft. 7 in.)	3.53 m (11 ft. 7 in.)	
Long Stabilizers	4.03 m (13 ft. 3 in.)	4.03 m (13 ft. 3 in.)	4.03 m (13 ft. 3 in.)	4.03 m (13 ft. 3 in.)	4.03 m (13 ft. 3 in.)	
N Bucket Rotation	190 deg.	190 deg.	190 deg.	190 deg.	190 deg.	
O Transport Height	3.51 m (11 ft. 6 in.)	3.48 m (11 ft. 5 in.)	3.48 m (11 ft. 5 in.)	3.48 m (11 ft. 5 in.)	3.48 m (11 ft. 5 in.)	
Loader Dimensions/Performance						
P Bucket Dump Angle, Maximum	45 deg.			45 deg.		
Q Rollback Angle at Ground Level	40 deg.			40 deg.		
	Standard Loader Option				Tool-Carrier Loader Option	
	<i>Heavy-duty</i>	<i>Heavy-duty long lip</i>	<i>Heavy-duty</i>	<i>Multipurpose</i>	<i>Heavy-duty</i>	<i>Multipurpose</i>
Bucket Capacity	0.86 m ³ (1.12 cu. yd.)	0.96 m ³ (1.25 cu. yd.)	1.00 m ³ (1.31 cu. yd.)	1.00 m ³ (1.31 cu. yd.)	1.00 m ³ (1.31 cu. yd.)	1.00 m ³ (1.31 cu. yd.)
Width	2184 mm (86 in.)	2184 mm (86 in.)	2337 mm (92 in.)	2337 mm (92 in.)	2337 mm (92 in.)	2337 mm (92 in.)
Weight	390 kg (860 lb.)	405 kg (892 lb.)	521 kg (1,148 lb.)	816 kg (1,800 lb.)	492 kg (1,085 lb.)	788 kg (1,737 lb.)
Breakout Force	49.2 kN (11,051 lb.)	45.4 kN (10,210 lb.)	45.8 kN (10,300 lb.)	42.9 kN (9,650 lb.)	50.9 kN (11,450 lb.)	43.1 kN (9,680 lb.)
Lift Capacity, Full Height	3335 kg (7,353 lb.)	3329 kg (7,340 lb.)	3266 kg (7,200 lb.)	2994 kg (6,600 lb.)	3273 kg (7,215 lb.)	2654 kg (5,850 lb.)
R Height to Bucket Hinge Pin, Maximum	3.40 m (11 ft. 2 in.)	3.40 m (11 ft. 2 in.)	3.40 m (11 ft. 2 in.)	3.40 m (11 ft. 2 in.)	3.40 m (11 ft. 2 in.)	3.40 m (11 ft. 2 in.)
S Dump Clearance, Bucket at 45 deg.	2.69 m (8 ft. 10 in.)	2.48 m (8 ft. 2 in.)	2.64 m (8 ft. 8 in.)	2.62 m (8 ft. 7 in.)	2.59 m (8 ft. 6 in.)	2.50 m (8 ft. 2 in.)
T Reach at Full Height, Bucket at 45 deg.	767 mm (30.2 in.)	911 mm (35.9 in.)	765 mm (30.1 in.)	818 mm (32.2 in.)	762 mm (30.0 in.)	836 mm (32.9 in.)
U Digging Depth Below Ground, Bucket Level	175 mm (6.9 in.)	147 mm (5.8 in.)	206 mm (8.1 in.)	185 mm (7.3 in.)	140 mm (5.5 in.)	152 mm (6.0 in.)
V Length from Front Axle Centerline to Bucket Cutting Edge	2.03 m (6 ft. 8 in.)	2.18 m (7 ft. 2 in.)	2.03 m (6 ft. 8 in.)	2.15 m (7 ft. 1 in.)	2.15 m (7 ft. 1 in.)	2.27 m (7 ft. 5 in.)

Lift Capacity with Quick-Coupler/Forks	310SK		310SK TC	
Hydraulic Capacity	1219-mm (48 in.) Tines	1524-mm (60 in.) Tines	1219-mm (48 in.) Tines	1524-mm (60 in.) Tines
A ¹ Maximum Height	2073 kg (4,570 lb.)	1891 kg (4,170 lb.)	2211 kg (4,875 lb.)	2053 kg (4,526 lb.)
B ¹ Maximum Reach	3162 kg (6,971 lb.)	3003 kg (6,621 lb.)	3438 kg (7,580 lb.)	3294 kg (7,261 lb.)
C ¹ At Ground Line	4145 kg (9,138 lb.)	3883 kg (8,561 lb.)	4400 kg (9,700 lb.)	4180 kg (9,215 lb.)
D ¹ Below Ground Line	211 mm (8.3 in.)	211 mm (8.3 in.)	211 mm (8.3 in.)	211 mm (8.3 in.)

310SK BACKHOE LOADER

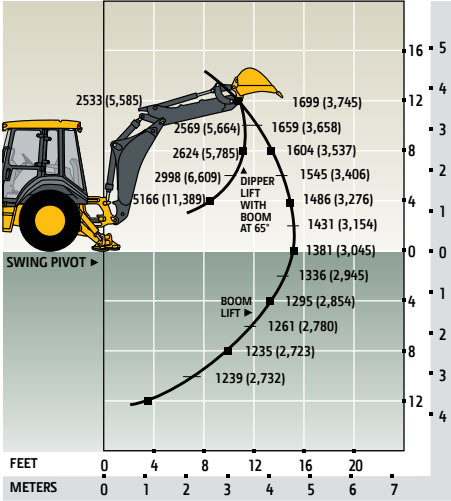


310SK TC BACKHOE LOADER

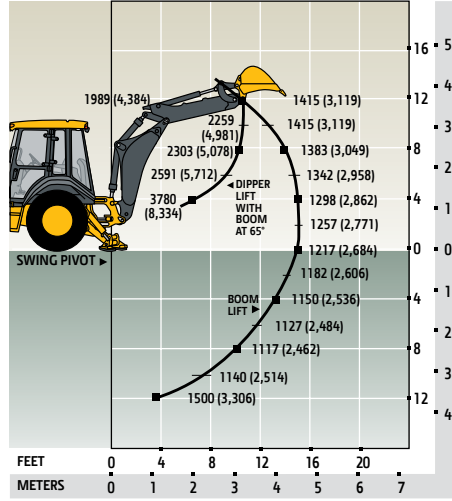


Lift capacities are over-end values in kg (lb.) according to SAE J31. Figures listed are 87% of the maximum lift force available. Base vehicle includes counterweight.

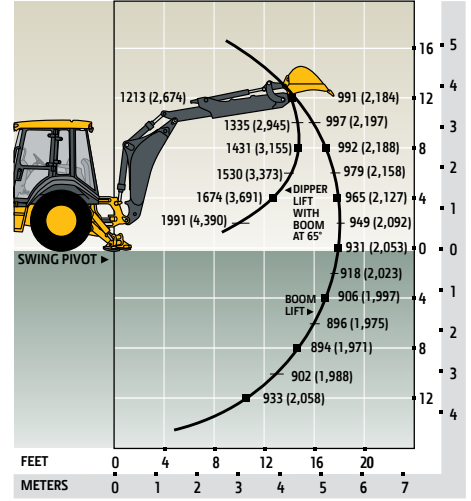
310SK Backhoe with Standard Dipperstick



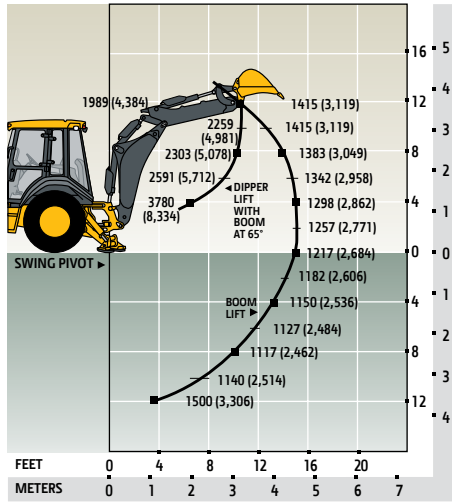
310SK Backhoe with 1.07-m (3 ft. 6 in.)
Extendable Dipperstick, Retracted



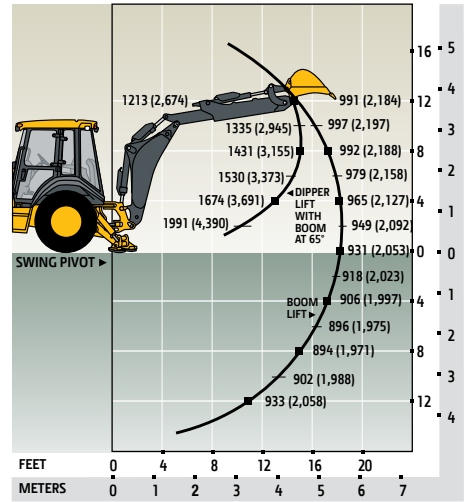
310SK Backhoe with 1.07-m (3 ft. 6 in.)
Extendable Dipperstick, Extended



310SK TC Backhoe with 1.07-m (3 ft. 6 in.)
Extendable Dipperstick, Retracted



310SK TC Backhoe with 1.07-m (3 ft. 6 in.)
Extendable Dipperstick, Extended



310SK / 410K

Key: ● Standard ▲ Optional or special

See your John Deere dealer for further information.

310SK	410K	Engine
●	●	Meets EPA Interim Tier 4/EU Stage IIIB emissions
●	●	John Deere Model 4045HT073 — 4.5L, 72 kW (97 hp) net peak power, turbocharged, isolation mounted
	●	John Deere Model 4045HT063 — 4.5L, 80 kW (107 hp) net peak power, turbocharged, isolation mounted
●	●	Vertical spin-on engine oil filter
●	●	Vertical spin-on fuel filter with water separator
●	●	Oil-to-water engine oil cooler
●	●	Antifreeze, -40 deg. C (-40 deg. F)
●	●	Coolant recovery tank with low-level indicator
●	●	Foldout, hinged cooling system
●	●	Serpentine belt with automatic belt tensioner
●	●	Electronically controlled, variable-rate suction-type cooling fan
●	●	High ambient temperature engine cooling
●	●	Dual-element dry-type air cleaner
●	●	Self-cleaning exhaust aftertreatment system
●	●	Muffler, under hood, with curved-end exhaust stack
▲	▲	Chrome exhaust extension
●	●	Glow plugs
▲	▲	1,000-watt electric engine coolant heater
●	●	Electronic fuel lift pump
Powertrain		
●	●	PowerShift™ transmission: Torque converter with twist-grip Transmission Control Lever (TCL) and neutral safety switch interlock (1st through 5th gears)
●	●	5th-gear overdrive
▲	▲	AutoShift transmission
●	●	Transmission oil cooler
●	●	Vertical spin-on transmission filter
▲	▲	Transmission remote oil-sampling port
●	●	Differential lock, electric foot actuated, protection on/off
●	●	Auto shutdown
●	●	Planetary final drives
●	●	Power-assisted hydraulic service brakes (conform to ISO 3450): Inboard, wet multi-disc, self-adjusting and self-equalizing
●	●	Parking/emergency brake with electric switch control (conforms to ISO 3450): Spring applied, hydraulically released wet multi-disc / Independent of service brakes
●	●	Hydrostatic power steering with emergency manual mode
▲	▲	Non-powered front axle
●	●	MFWD with traction-control limited-slip differential: Electric on/off control / Sealed axle
●	●	Automatic MFWD braking (4th and 5th gear overdrive only)
▲	▲	Rear wheel spacers for use with chains
▲	▲	MFWD driveshaft guard
Backhoe		
●	●	Standard dipperstick, 4.42-m (14 ft. 6 in.) digging depth
	●	Standard dipperstick, 4.83-m (15 ft. 10 in.) digging depth
▲	▲	Extendable dipperstick, 1.07-m (3 ft. 6 in.) extension
▲	▲	Extendable dipperstick, 1.22-m (4 ft.) extension
▲	▲	Heavy-duty backhoe bucket cylinder
●	●	ISO (Deere) 2-lever mechanical backhoe controls
▲	▲	2-lever pilot controls with pattern-selection feature
●	●	Backhoe transport lock lever
●	●	Swing lock pin stored in operator's station
●	●	Stabilizers with 2-direction anti-drift valves

310SK	410K	Backhoe (continued)
●	●	Pivoting stabilizers with reversible pads
▲	▲	Extended (long) stabilizers with reversible pads
●	●	Less bucket, with bucket pins
▲	▲	Standard-duty backhoe bucket with lift loops
▲	▲	Heavy-duty backhoe bucket with lift loops
▲	▲	Severe-duty backhoe bucket with lift loops
▲	▲	Backhoe couplers for John Deere, Case, and Cat buckets
▲	▲	Auxiliary backhoe valve for swingers, thumbs, etc. with auxiliary plumbing
▲	▲	Auxiliary backhoe valve for hammers and compactors with auxiliary plumbing
▲	▲	Hydraulic thumb
Loader*		
●	●	Loader bucket anti-spill (rollback)
●	●	Return-to-dig feature
●	●	Single-lever control with electric clutch disconnect
●	●	Bucket-level indicator
●	●	Loader boom service lock
▲	▲	Auxiliary loader hydraulics with single control lever with EH auxiliary control (MFWD and clutch disconnect)
▲	▲	Hydraulic coupler for buckets, forks, etc.
●	●	Less bucket, with bucket pins
●	●	High-visibility loader arms
Hydraulic System		
●	●	136-L/m (36 gpm) tandem-gear pump with unloader, open-center system
●	●	159-L/m (42 gpm) axial-piston pump, PCLS system
●	●	Auto-idle
●	●	Economy mode
●	●	Dedicated hydraulic reservoir
●	●	"O"-ring face-seal connectors
●	●	6-micron vertical spin-on filter
Electrical System		
●	●	12-volt system
●	●	120-amp alternator
●	●	Single battery with 190-min. reserve capacity and 950 CCA
▲	▲	Dual batteries with 380-min. reserve capacity and 1,900 CCA
●	●	Positive terminal battery cover
●	●	Blade-type multi-fused circuits
●	●	By-pass start safety cover on starter
▲	▲	Master disconnect switch
Lights		
●	●	Halogen lights (10), 32,500 candlepower each (4 front driving/working, 4 rear working, and 2 side docking)
●	●	Turn signal/flasher (2 front and 2 rear)
●	●	Rear stop and tail (2)
●	●	Rear reflectors (2)
Operator's Station		
●	●	Modular-design ROPS/FOPS (Level 2) canopy with molded roof (meets ISO 3449 and ISO 3471/SAE J1040): Isolation mounted
●	●	Left and right access
●	●	Slip-resistant steps and ergonomically located handholds (conform to SAE J185)
●	●	Molded floor mats (with pilot controls only)
▲	▲	Headliner (with cab only)
●	●	Coat hook
●	●	12-volt outlets (2)
●	●	Built-in cup holder
●	●	Built-in Operator's Manual storage compartment
●	●	Lockable right-side storage

310SK	410K	Operator's Station (continued)
▲	▲	Lockable left-hand storage with cup holders
●	●	Interior rearview mirror
▲	▲	Interior front-view mirror
▲	▲	Outside rearview mirrors
●	●	Rotary-dial hand throttle
●	●	Suspended foot throttle
●	●	Horn
●	●	Seat belt, 76-mm (3 in.), with retractor
●	●	Keysless start
●	●	Machine security
●	●	Engine coolant temperature gauge
●	●	Transmission oil-temperature gauge
●	●	Fuel gauge
●	●	Digital display of engine hours, engine rpm, and system voltage
●	●	Sealed-switch module
●	●	Monitor system with audible and visual warnings: Engine air restriction / Low alternator voltage / Engine oil pressure / Hydraulic filter restriction / Parking brake on/off / Aftertreatment temperature / Transmission oil temperature / Fuel / Hour meter / Machine diagnostic information via 4-push-button/LCD operator interface
●	●	Canopy: Mechanical suspension deluxe vinyl swivel seat with lumbar adjustment and armrests (fully adjustable)
▲	▲	Cab with Dual Doors: Mechanical suspension deluxe fabric swivel seat with lumbar adjustment / Tilt steering, infinitely adjustable / AM/FM/weather-band radio / Sun visor / Headliner, dome light, left and right cab doors, tinted safety glass, windshield wipers (1 rear and 1 front), front windshield washer, fresh-air intake, and heater/defroster/pressurizer (11.7-kW [40,000 Btu/h] heater)
▲	▲	Ultimate Cab: Air-suspension deluxe fabric swivel seat with lumbar adjustment / Tilt steering, infinitely adjustable / AM/FM/weather-band radio with CD player / Sun visor / Headliner, dome light, left and right cab doors, tinted safety glass, windshield wipers (1 rear and 1 front), front windshield washer, fresh-air intake, and heater/defroster/pressurizer (11.7-kW [40,000 Btu/h] heater) / Air conditioner (7.6-kW [26,000 Btu/h] output and CFC-free R134a refrigerant)
Overall Vehicle		
●	●	1-piece unitized construction mainframe
●	●	Vehicle tie-downs (2 front and 2 rear)
●	●	Remote grease bank for front axle
●	●	Front cover
▲	▲	Heavy-duty front bumper
▲	▲	204-kg (450 lb.) front counterweight
▲	▲	340-kg (750 lb.) front counterweight
▲	▲	454-kg (1,000 lb.) front counterweight
▲	▲	567-kg (1,250 lb.) front counterweight
▲	▲	Rubber grille bumpers
●	●	Fuel tank, 155.2 L (41 gal.), ground-level fueling
●	●	2-position easy-tilt hood
●	●	Extended grille frame
●	●	Removable toolbox with padlock hasp
●	●	Vandal protection for locking monitor, engine hood, toolbox, hydraulic reservoir, and fuel tank
●	●	Reverse warning alarm
●	●	Dent-resistant full-coverage rear fenders
▲	▲	Backhoe boom-protection plate
●	●	JDLINK™ Ultimate wireless communication system (available in specific countries; see your dealer for details)

*See dealer for range of heavy-duty, multipurpose, and coupler buckets and forks.

Net engine power is with standard equipment including air cleaner, exhaust system, alternator, and cooling fan at test conditions specified per ISO 9249. No derating is required up to 3050-m (10,000 ft.) altitude. Specifications and design are subject to change without notice. Wherever applicable, specifications are in accordance with ISO standards. Except where otherwise noted, these specifications are based on 310SK and 410K units with 610-mm x 0.21-m³ (24 in. x 7.5 cu. ft.) backhoe buckets; a 310SK unit with 19.5L-24-in. 10PR (R4) tubeless rear and 11L-16-in. 12PR (F3) front tires and 0.86-m³ (1.12 cu. yd.) loader bucket; and a 410K unit with 21L-24-in. 10PR (R4) tubeless rear and 14.5/75-16.1-in. 10PR (F3) front tires and 1.00-m³ (1.31 cu. yd.) loader bucket.

Additional equipment: 310SK TC / 410K TC

Key: ● Standard ▲ Optional or special

See your John Deere dealer for further information.

310SK TC	410K TC	Engine
●	●	Meets EPA Interim Tier 4/EU Stage IIIB emissions
●		John Deere Model 4045HT063 — 4.5L, 76 kW (102 hp) net peak power, turbocharged, isolation mounted
	●	John Deere Model 4045HT063 — 4.5L, 79 kW (106 hp) net peak power, turbocharged, isolation mounted
●	●	Vertical spin-on engine oil filter
●	●	Vertical spin-on fuel filter with water separator
●	●	Oil-to-water engine oil cooler
●	●	Antifreeze, -40 deg. C (-40 deg. F)
●	●	Coolant recovery tank with low-level indicator
●	●	Foldout, hinged cooling system
●	●	Serpentine belt with automatic belt tensioner
●	●	Electronically controlled, variable-rate suction-type cooling fan
●	●	High ambient temperature engine cooling
●	●	Dual-element dry-type air cleaner
●	●	Self-cleaning exhaust aftertreatment system
●	●	Muffler, under hood, with curved-end exhaust stack
▲	▲	Chrome exhaust extension
●	●	Glow plugs
●	●	1,000-watt electric engine coolant heater
●	●	Electronic fuel lift pump
Powertrain		
●	●	PowerShift™ transmission: Torque converter with twist-grip Transmission Control Lever (TCL) and neutral safety switch interlock (1st through 5th gears)
●	●	5th-gear overdrive
▲	▲	AutoShift transmission
●	●	Auto shutdown
●	●	Transmission oil cooler
●	●	Vertical spin-on transmission filter
●	●	Transmission remote oil-sampling port
●	●	Differential lock, electric foot actuated, protection on/off
●	●	Planetary final drives
●	●	Power-assisted hydraulic service brakes (conform to ISO 3450): Inboard, wet multi-disc, self-adjusting and self-equalizing
●	●	Parking/emergency brake with electric switch control (conforms to ISO 3450): Spring applied, hydraulically released wet multi-disc / Independent of service brakes
●	●	Hydrostatic power steering with emergency manual mode
●	●	MFWD with traction-control limited-slip differential: Electric on/off control / Sealed axle
●	●	Automatic MFWD braking (4th and 5th gear overdrive only)
▲	▲	Rear wheel spacers for use with chains
▲	▲	MFWD driveshaft guard
Backhoe		
●	●	Extendable dipperstick, 1.07-m (3 ft. 6 in.) extension
●	●	Extendable dipperstick, 1.22-m (4 ft.) extension
●	●	Heavy-duty backhoe bucket cylinder
●	●	Armrest-mounted joysticks with electric clutch cutoff, auxiliary loader control, extendable dipperstick control, MFWD control (momentary), MFWD control (permanent), proportional auxiliary backhoe control, and horn
●	●	Mini joystick for simultaneous control of loader and backhoe
●	●	Backhoe transport lock lever
●	●	Swing lock pin stored in operator's station

310SK TC	410K TC	Backhoe (continued)
●	●	Stabilizers with 2-direction anti-drift valves
●	●	Pivoting stabilizers with reversible pads
●	●	Extended (long) stabilizers with reversible pads
●	●	Less bucket, with bucket pins
▲	▲	Standard-duty backhoe bucket with lift loops
▲	▲	Heavy-duty backhoe bucket with lift loops
▲	▲	Severe-duty backhoe bucket with lift loops
▲	▲	Backhoe couplers for C-, D-, E-, G-, J-, and K-Series John Deere, Case, and Cat buckets
●	●	Auxiliary backhoe valve for swingers, thumbs, etc. with auxiliary plumbing
●	●	Auxiliary backhoe valve for hammers and compactors with auxiliary plumbing
▲	▲	Hydraulic thumb
Loader¹		
●	●	Loader bucket anti-spill (settable height)
●	●	Return-to-dig feature (settable/activates from curled or dumped bucket position)
●	●	Armrest-mounted joysticks with electric clutch cutoff, auxiliary loader control, extendable dipperstick control, MFWD control (momentary), MFWD control (permanent), proportional auxiliary backhoe control, and horn
●	●	Auxiliary loader hydraulics with thumb-switch control
●	●	Mini joystick for simultaneous control of loader and backhoe
●	●	Electric bucket-level indicator
●	●	Loader boom service lock
●	●	Ride control
●	●	Less coupler bucket
●	●	High-visibility loader arms
●	●	Tool-carrier loader: Front loader hydraulic quick-coupler / Parallel lift (selectable) / Return-to-carry (selectable/height set) / Boom-height kickout
Hydraulic System		
●	●	159-L/m (42 gpm) axial-piston pump
●	●	Auto-idle
●	●	Economy mode
●	●	Dedicated hydraulic reservoir
●	●	"O"-ring face-seal connectors
●	●	6-micron vertical spin-on filter
Electrical System		
●	●	12-volt system
●	●	200-amp alternator
●	●	Dual batteries with 380-min. reserve capacity and 1,900 CCA
●	●	Dual battery master-disconnect switch
●	●	Positive terminal battery cover
●	●	Blade-type multi-fused circuits
●	●	By-pass start safety cover on starter
Lights		
●	●	Halogen lights (10), 32,500 candlepower each (4 front driving/working, 4 rear working, and 2 side docking)
●	●	Turn signal/flashing (2 front and 2 rear)
●	●	Rear stop and tail (2)
●	●	Rear reflectors (2)
Operator's Station		
●	●	Modular-design ROPS/FOPS (Level 2) canopy with molded roof (meets ISO 3449 and ISO 3471/SAE J1040): Isolation mounted
●	●	Left and right access
●	●	Slip-resistant steps and ergonomically located handholds (conform to SAE J185)
●	●	Molded floor mats

310SK TC	410K TC	Operator's Station (continued)
●	●	Headliner
●	●	Coat hook
●	●	12-volt outlets (2)
●	●	Built-in cup holder
●	●	Built-in Operator's Manual storage compartment
●	●	Lockable right-side storage
▲	▲	Lockable left-hand storage with cup holders
●	●	Interior rearview mirror
●	●	Interior front-view mirror
▲	▲	Outside rearview mirrors
●	●	Stabilizer controls in left armrest
●	●	Rotary-dial hand throttle
●	●	Suspended foot throttle
●	●	Tilt steering, infinitely adjustable
●	●	Horn in side console
●	●	Seat belt, 76-mm (3 in.), with retractor
●	●	Keyless start
●	●	Machine security (within monitor)
●	●	Engine coolant temperature gauge
●	●	Oil-temperature gauge
●	●	Fuel gauge
●	●	Sealed-switch monitor
●	●	Digital display of engine hours, engine rpm, and system voltage
●	●	Monitor system with audible and visual warnings: Engine air restriction / Low alternator voltage / Engine oil pressure / Hydraulic filter restriction / Parking brake on/off / Seat belt / Machine diagnostic information via 4-push-button/LCD operator interface / Aftertreatment device temperature / Transmission oil temperature / Fuel / Hour meter
▲	▲	Canopy: Air-suspension deluxe vinyl swivel seat with lumbar adjustment and armrests (fully adjustable)
●	●	Ultimate Cab: Air-suspension deluxe fabric swivel seat with lumbar adjustment / AM/FM/weather-band radio with CD player / Sun visor / Headliner, dome light, left and right cab doors, tinted safety glass, windshield wipers (1 rear and 1 front), front windshield washer, fresh-air intake, and heater/defroster/pressurizer [11.7-kW [40,000 Btu/h] heater] / Air conditioner [7.6-kW [26,000 Btu/h] output and CFC-free R134a refrigerant]
Overall Vehicle		
●	●	1-piece unitized construction mainframe
●	●	Vehicle tie-downs (2 front and 2 rear)
●	●	Remote grease bank for front axle
●	●	Heavy-duty front bumper
▲	▲	204-kg (450 lb.) front counterweight
▲	▲	340-kg (750 lb.) front counterweight
▲	▲	454-kg (1,000 lb.) front counterweight
▲	▲	567-kg (1,250 lb.) front counterweight
▲	▲	Rubber grille bumpers
●	●	Fuel tank, 155.2 L (41 gal.), ground-level fueling
●	●	2-position easy-tilt hood
●	●	Extended grille frame
●	●	Removable toolbox with padlock hasp
●	●	Vandal protection for locking engine hood, toolbox, hydraulic reservoir, and fuel tank
●	●	Reverse warning alarm
●	●	Dent-resistant full-coverage rear fenders
●	●	JDLink™ Ultimate wireless communication system (available in specific countries; see your dealer for details)

¹See dealer for range of heavy-duty, multipurpose, and coupler buckets and forks.

Net engine power is with standard equipment including air cleaner, exhaust system, alternator, and cooling fan at test conditions specified per ISO 9249. No derating is required up to 3050-m (10,000 ft.) altitude. Specifications and design are subject to change without notice. Wherever applicable, specifications are in accordance with ISO standards. Except where otherwise noted, these specifications are based on units with 12.5/80-18-in. 14PR (I3) front tires and 610-mm x 0.21-m³ (24 in. x 7.5 cu. ft.) backhoe buckets; a 310SK TC unit with 19.5L-24-in. 10PR (R4) tubeless rear tires and 1.00-m³ (1.31 cu. yd.) loader bucket; and a 410K TC unit with 21L-24-in. 10PR (R4) tubeless rear tires and 1.15-m³ (1.50 cu. yd.) loader bucket.

PRODUCT SPECIFICATIONS FOR 420 XE



ENGINE

Net Power - SAE J1349	92 HP
Displacement	220 in ³
Engine Model	C3.6 74.5 kW (100 hp) Electronic Turbo Intercooled
Net Power Rating at 2,200 rpm - ISO 9249	91 HP
Power Rating Conditions - No De-Rating Required Up To	10000 ft
Net Torque Rise - 1,400 rpm - SAE J1349	47%
Ratings at 2,200 rpm - Gross Power SAE J1995	102 HP
Ratings at 2,200 rpm - Gross Power ISO 14396	100 HP
Net Power Rating at 2,200 rpm - SAE J1349	92 HP
Net Torque Rise - 1,400 rpm - SAE J1349	322 ft-lb
Emissions	Engine meets Tier 4 Final/Stage V emission standards.
Net Peak Power - 1,800 rpm - ISO 9249	105 HP
Dimensions - Bore	3.86 in
Dimensions - Stroke	4.72 in
Net Peak Power Rating @ 1,800 rpm - SAE J1349	105 HP

WEIGHTS

**Operating Weight -
Maximum** 24251 lb

Cab - ROPS/FOPS 320 lb

Ride Control 33 lb

Air Conditioning 99 lb

Note Machine configuration: standard stick hoe, OROPS canopy, AWD power shift transmission, 0.96 m³ (1.25 yd³) GP (General Purpose) loader bucket, 610 mm (24 in) standard duty hoe bucket, front 340/80-18 and rear 500/70-240 kg (530 lb) counterweight, 80 kg (176 lb) operator, full fuel tank.

**MP Bucket (0.96 m³/1.25
yd³) - With Fold-Over
Forks** 2017 lb

**Operating Weight -
Maximum - ROPS
Capacity** 24251 lb

**MP Bucket (0.96 m³/1.25
yd³) - Without Fold-Over
Forks** 1642 lb

**Power-Shift
Transmission** STD

**Extendible Stick
(excludes ft.
counterweight)** 595 lb

**Counterweights, base -
Maximum** 1014 lb

Counterweights, base 256 lb

Loader QC 540 lb

All-Wheel Drive STD

Operating Weight (estimated)	17271 lb
---	----------

Counterweights, base - Stackable, one	529 lb
--	--------

BACKHOE

Dig Depth - Standard	14 ft
-----------------------------	-------

TRANSMISSION

Power-Shift Transmission with LTC - Optional - Forward - 2nd	5.8 mile/h
---	------------

Power-Shift Transmission with LTC - Optional - Forward - 6th LTC*	25 mile/h
--	-----------

Power-Shift Transmission with LTC - Optional - Forward - 5th LTC	18 mile/h
---	-----------

Power Shift Transmission - Standard - Forward - 3rd	12 mile/h
--	-----------

Power Shift Transmission - Standard - Reverse - 2nd	7.7 mile/h
--	------------

Power-Shift Transmission with LTC - Optional - Reverse - 3rd	17 mile/h
---	-----------

Power-Shift Transmission - Optional - Forward - 2nd	5.8 mile/h
--	------------

Power-Shift Transmission - Optional - Reverse - 1st	3.7 mile/h
--	------------

Power-Shift Transmission with LTC - Optional - Forward - 4th	12 mile/h
---	-----------

Power Shift Transmission - Standard - Forward - 1st	3.7 mile/h
--	------------

**Power-Shift Transmission with LTC -
Optional - Forward - 5th** 17 mile/h

**Power-Shift Transmission - Optional -
Reverse - 2nd** 7.7 mile/h

**Power-Shift Transmission with LTC -
Optional - Reverse - 1st** 3.7 mile/h

**Power-Shift Transmission with LTC -
Optional - Forward - 1st** 3.7 mile/h

**Power-Shift Transmission - Optional -
Reverse - 3rd** 17 mile/h

**Power Shift Transmission - Standard -
Reverse - 1st** 3.7 mile/h

**Power-Shift Transmission - Optional -
Forward - 3rd** 8 mile/h

**Power Shift Transmission - Standard -
Reverse - 3rd** 17 mile/h

**Power-Shift Transmission with LTC -
Optional - Forward - 6th** 25 mile/h

**Power Shift Transmission - Standard -
Forward - 4th** 25 mile/h

**Power Shift Transmission - Standard -
Forward - 2nd** 5.8 mile/h

**Power-Shift Transmission with LTC -
Optional - Forward - 3rd** 8 mile/h

**Power-Shift Transmission with LTC -
Optional - Reverse - 2nd** 7.7 mile/h

**Power-Shift Transmission - Optional -
Forward - 6th** 25 mile/h

Power-Shift Transmission - Optional - Forward - 4th	12 mile/h
--	-----------

Power-Shift Transmission - Optional - Forward - 5th	17 mile/h
--	-----------

Power-Shift Transmission - Optional - Forward -1st	3.7 mile/h
---	------------

Note (2)	*Limited by engine speed to 40 km/h (25 mph).
-----------------	---

Note (1)	Travel speeds of two wheel drive backhoe loader at full throttle, when equipped with 500/70-24 rear tires.
-----------------	--

AXLE RATINGS

Rear Axle - Dynamic	22046 lb
----------------------------	----------

Front Axle, AWD - Dynamic	19841 lb
----------------------------------	----------

Front Axle, AWD - Static	51808 lb
---------------------------------	----------

Rear Axle - Static	58422 lb
---------------------------	----------

HYDRAULIC SYSTEM

Pump Type	Variable-flow, Axial Piston
------------------	-----------------------------

System Pressure - Loader	3626 psi
---------------------------------	----------

Pump Capacity at 2,200 rpm	49.4 gal/min
-----------------------------------	--------------

System Pressure - Backhoe	3626 psi
----------------------------------	----------

Type	Closed Center
-------------	---------------

STEERING

Bore	2.6 in
-------------	--------

Turning Circle - (inner wheel not braked) - Outside Front Wheels	26.92 ft
Turning Circle - (inner wheel not braked) - Outside Widest Loader Bucket	35.25 ft
Power Steering	Hydrostatic
Rod Diameter	1.6 in
Type	Front Wheel Steering
Stroke	4.2 in
Axle Oscillation	11°
Cylinder	One Double-Acting

SERVICE REFILL CAPACITIES

Fuel Tank	42.3 gal (US)
Engine Oil - With Filter	2.4 gal (US)
Hydraulic Tank	11.1 gal (US)
Hydraulic System	25.1 gal (US)
Cooling System with Air Conditioning	4.8 gal (US)
Rear Axle	4.2 gal (US)
Diesel Exhaust Fluid (DEF)	5 gal (US)
Rear Axle - Planetaries	0.4 gal (US)
Transmission - Power Shift - AWD	5 gal (US)
Transmission - Power Shuttle - AWD	4.8 gal (US)

Front Axle (AWD) - Planetaries

0.2 gal (US)

Front Axle (AWD)

2.9 gal (US)

420 XE STANDARD EQUIPMENT

STANDARD EQUIPMENT

Adjustable auxiliary controls, backhoe loader
Air cleaner
Alarm, back-up
Audible system fault alarm
Automatic Engine Speed Control (AESC)
Battery, maintenance-free, 850 CCA
Battery disconnect switch
Boom transport lock
Brace, lift cylinder
Brake, parking, Spring Applied Hydraulically Released (SAHR)
Brakes, hydraulically boosted, oil disc, dual pedals, interlocking
Bucket level indicator
Canopy, ROPS/FOPS
Cat cushion swing system
Coat restraint
Coolant/antifreeze, extended life
Dome light (cab only)
Diagnostic port for engine, machine and gauge cluster Electronic Control Modules
Differential lock, loader joystick
Drink holders, two
Engine, Cat C3.6 (Direct Injection Turbocharged), meets Tier 4 Final/Stage V emission standards, Selective Catalytic Reduction, Diesel Oxidation Catalyst (DOC)
Engine enclosure, sound suppression, removable side panels
Face seals, O-ring
Fan, suction and guard
Fast reversing shuttle, all gears
Fenders, rear
Filters, spin-on: fuel, engine oil, transmission oil, water separator
Filters, bowl and cartridge: hydraulic fluid
Flashing hazards/signal lights
Floor mat
Four wheel drive
Four wheel drive shaft guard
Fuel tank, fully enclosed
Fully hinged front grill for cooling package cleaning access
Gauge cluster: coolant temperature, fuel level, torque converter temperature, DEF level
Ground level fuel fill and DEF fill
Halogen lights, working (2 front, 2 rear)
High ambient cooling package

Hood lock, inside cab
Hydraulic Lock Out, loader, backhoe, auxiliary hydraulics
Hydraulic hose, XT™
Hydraulic oil cooler
Hydraulic oil level sight gauge
Hydraulic valves, loader 2 function
Hydraulic valves, backhoe 4 function
Hydraulics, load sensing with variable displacement piston pump
Indicator lights: wait to start, water in fuel, engine warning, warning lamp, emissions module malfunction, low battery/charging system warning, high hydraulic oil temperature: LCD warnings: engine oil pressure, machine locked, service due, air filter blocked, high coolant temperature, auto idle shutdown, high torque converter temperature, hydraulic filter bypass
Instrument panel lights
Key start/stop system
LCD operator display with soft key controls: engine speed, hour meter, gear/direction, battery voltage, hydraulic oil temperature, torque converter temperature, coolant temperature, trip totals (fuel and hours), lifetime totals (fuel and hours), operator settings (units, brightness, programmable hoe auxiliary flow), service mode diagnostics, maintenance intervals, ECM/system info
Loader, EH Parallel Lift
Loader, Programmable Kick Out
Loader, Programmable Return To Dig
Loader, single tilt
Mirror, interior, rearview
One-touch low idle
Open circuit breather
Pattern changer, in cab
Power receptacle, 12 volt, 2 internal, 1 external
Power receptacle, 5 volt USB, 1 internal
Power steering, hydrostatic
Product Link™, satellite, network manager
Product Link, cellular, network manager
Seat belt, retractable, 51 mm (2 in)
Seat mounted joystick controls: backhoe and loader, EH operated, excavator style with pattern changer
Socket, two roof
Stabilizers, EH Control, Auto-UP
Stabilizer shoes, street
Steering knob
Seat, air suspension, vinyl cover, with armrest
Starting system, glow plugs
Steering column, tilting, telescopic
Storage compartment, lockable
Storage tray
Stop and tail lights
Swing transport lock
Tires
Toolbox, external, lockable
Torque converter
Throttle, hand and foot, electronic

Transmission, 4 speed, powershift
Transmission neutralizer switch
Transport tie-downs
Vandalism locks, four
Warning horn, electric

420 XE OPTIONAL EQUIPMENT

OPTIONAL EQUIPMENT

Auxiliary hydraulics, loader, adjustable flow
Auxiliary hydraulics, rear, adjustable flow
Battery, additional, 850 CCA
Cab, deluxe
Cold weather fuel (-30° C/-22° F)
Cold weather package, including additional battery, engine block heater, radiator antifreeze, cold weather fuel (-30° C/-22° F) and mounting for an ether bottle
Counterweights, 115 kg (255 lb), 240 kg (530 lb) or 460 kg (1,015 lb)
Fenders, front with integral steps
Guard, boom protection plate
Guard, stabilizer, rock
Hydraulic valves, loader with auxiliary roller thumb control (3rd valve for MP or Quick Coupler)
Hydraulic valves, backhoe (5th and 6th function)
Hydraulic lines, combined function auxiliary
LED lights, working (2 front, 2 rear)
Quick Coupler, hydraulic, dual lock
Quick Coupler, manual, dual lock
Quick Coupler, manual, pin lock
Radio and CD player, Bluetooth®
Ride Control
Rotating beacon, magnetic mount
Seat, air suspension, fabric with armrest
Seat, air suspension, fabric with armrest, heated
Seat belt, retractable, 75 mm (3 in)
Security system, Bluetooth
Security system, operator display
Side mirrors, cab, external
Single Tilt Loader Coupler, Integrated Tool Carrier (IT) Interface
Stabilizer pads, reversible
Stick, extendible
Touch screen LCD Display: engine speed, hour meter, gear/direction, battery voltage, hydraulic oil temperature, torque converter temperature, coolant temperature, trip totals (fuel and hours), lifetime totals (fuel and hours), operator settings (units, brightness, programmable hoe auxiliary flow), service mode diagnostics, maintenance intervals, ECM/system info
Transmission, AutoShift with lock-up torque converter, 6 speed
Vandalism protection, gauge cover
Work Tool Attachments such as buckets, forks, material handling arms, augers, hammers, brooms, cold planers and vibratory plate compactors. See your Cat dealer for more information.