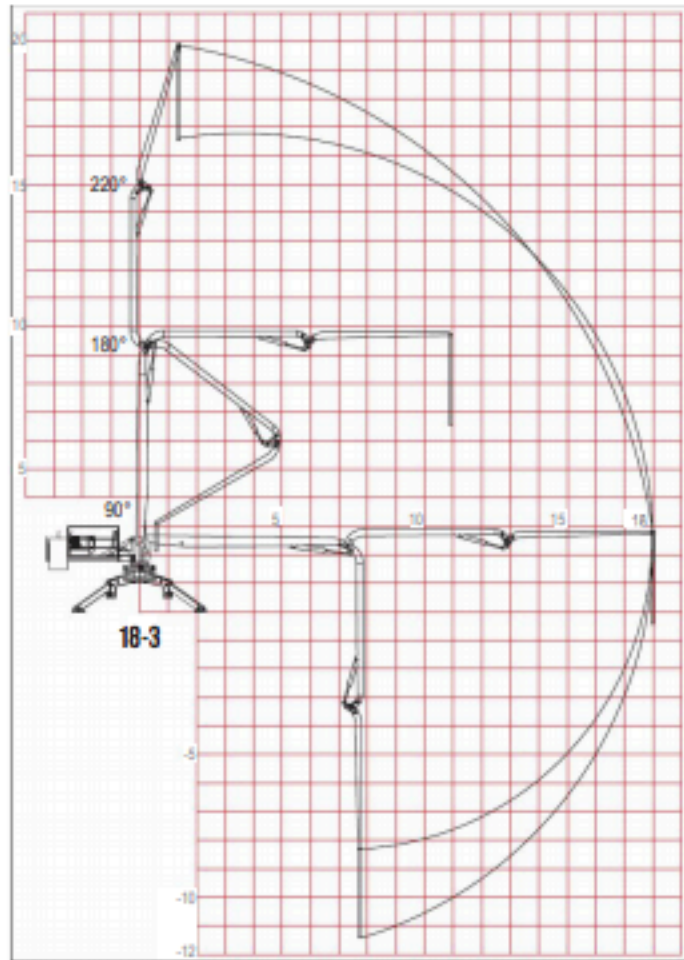


Dimension	Metric	Imperial
Vertical Reach from Ground	20.5 m	67 ft
Horizontal Reach	18 m	59 ft
Depth of Reach	12 m	39 ft
Minimum Unfolding Height	5.65 m	18.5 ft
Number of Boom Sections	3	
Folding System	Roll and Fold	
Rotation Range	370°	
Pipeline Diameter	125 mm	5 in
End Hose Length	3 m	10 ft
Control Mode	Remote or Manual	
Heaviest Single Part	1,900 kg	4,190 lbs
Counterweight	2,500 kg	5,500 lbs
Total Weight	6,950 kg	15,320 lbs
Power Sources	480V 60 Hz Gas or Deisel Option	



FOOTPRINT

F_{max}: 87kN
F_{max}: 19,400 lbf

